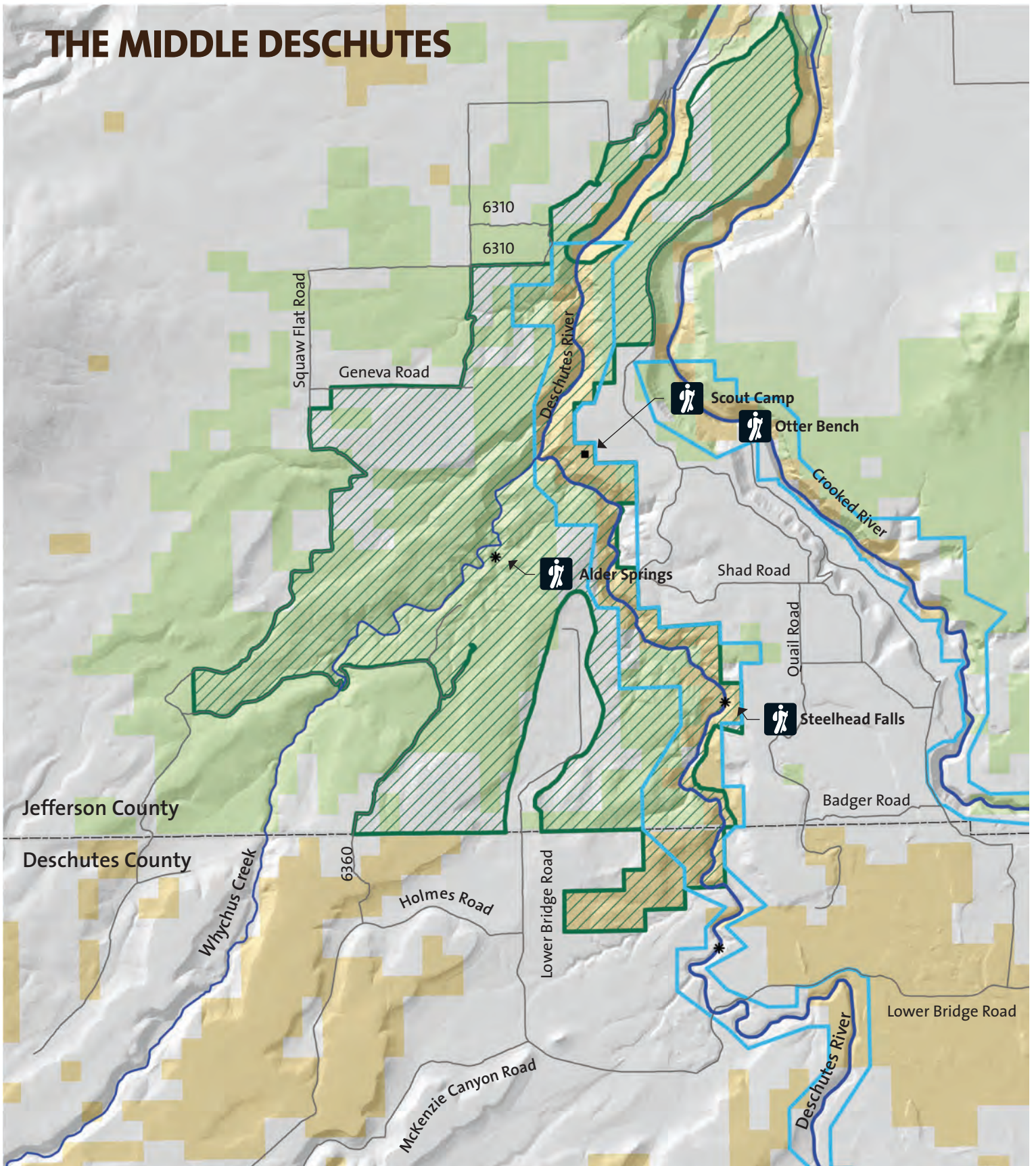


THE MIDDLE DESCHUTES



 Deschutes Canyon – Steelhead Falls Wilderness Study Area

 Wild & Scenic River Boundary

 County

 Bureau of Land Management

 Crooked River National Grassland



BE SAFE AND KEEP OUR CANYONS BEAUTIFUL!

Plan Ahead and Prepare

Know the rules of the area you're visiting and always travel prepared for emergencies or inclement weather.

Travel and Camp on Durable Surfaces

Avoid walking off trail through sensitive riparian areas or on steep slopes. Make your camp at least 200 feet from rivers and streams, and leave your site as you found it.

Respect Wildlife

Observe wildlife from a distance to allow them peace in their natural environment. Do not follow or approach them and never feed wild animals. The Middle Deschutes is home to potentially dangerous animals such as rattlesnakes, so always be aware of your surroundings and give wild animals plenty of space. If you do encounter a rattlesnake on the trail, please alert other hikers of its presence and report the sighting in the register at the trailhead if one is available.



Dispose of Waste Properly

Pack it in, pack it out.

Leave What You Find

Leave rocks, plants, animals and historical artifacts as you find them. Examine, but do not touch, cultural or historical artifacts such as structures and rock art. These treasures are delicate and even the oils on our hands can destroy them.

Be fire safe

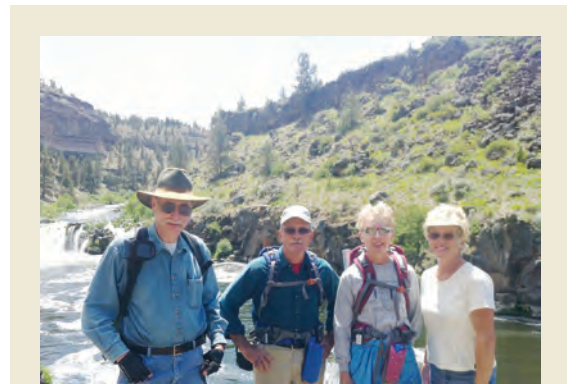
Know the current regulations on campfires for the area and follow the rules. Public lands within the Middle Deschutes area are closed to all fires during the summer, and the closure period may be extended when conditions are dry. When fires are allowed keep them small and in control at all times. Only use sticks from the ground that can be broken by hand. Burn all wood and coals to ash, put out campfires completely, then scatter cool ashes.

Be Considerate of Other Visitors

Respect other visitors and protect the quality of their experience by being courteous and yielding to other visitors on the trail. Avoid cliffs and steep areas and be conscious of hikers below you on the trail who may be hurt by any debris that you knock loose.

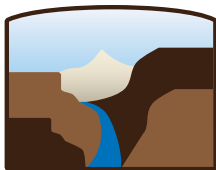


Photo © Jim Davis



For driving directions and more information about the hikes described in this brochure, please visit our website and click on "Explore the Middle Deschutes." For first-time visitors, the FANs host guided hikes throughout the year. Visit our website for a calendar and to sign up for a hike with the FANs.

www.fansofdeschutes.org



FRIENDS AND NEIGHBORS
OF THE **DESCHUTES CANYON AREA**